



Clark County Museum

San Pedro, Los Angeles & Salt Lake City Railroad Cottage

Built: 1909-1911

Style: Pyramidal Cottage

Original address: 512 S. Third St,

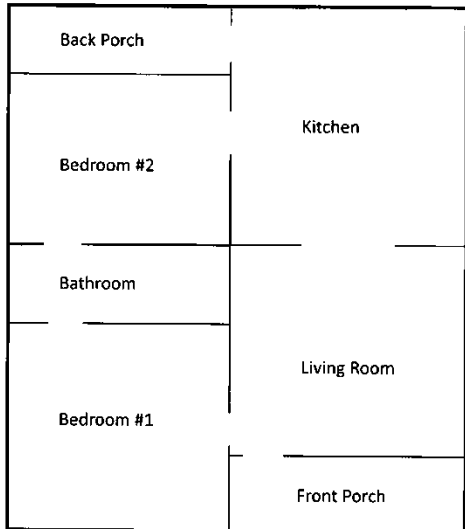
Las Vegas, NV

Moved: 2001

Opened for Exhibit: 2013



This little railroad cottage was one of 64 built between 1909-1911 as part of a plan to revive what was then the failing “Clark’s Las Vegas Townsite”. The goal of the revival plan was to build housing and expand the rail yards and machine shop to bring upper-level employees to Las Vegas. Soon after their construction conductors, engineers, brakemen, and even a railroad surgeon arrived and filled up the four block of the new development. These employees leased to own their cottage from the Las Vegas Land & Water Company which was the corporation created to oversee the Las Vegas interest for the San Pedro, Los Angeles & Salt Lake City Railroad. Leases would pay about 4 times the price of a standard wood structure of about \$18-\$20 per month. There were two options a two bedroom (seen here) or a three bedroom.



In 2001 with only 13 of the original structures remaining the Cram family donated one cottage to the museum, and it was moved to its current location. A few years later four cottages were moved and preserved at the Springs Preserve. The current number of remaining cottages is unknown. On November 16, 2013, the restoration of San Pedro, Los Angeles & Salt Lake City Railroad Cottage was complete and open for exhibit with the help the State of Nevada, and Las Vegas Centennial Commission.

